



Nisga'a Nation and the

Nass Region

British Columbia, Canada



Investment - Ready
Community Profile



Regional District of
Kitimat-Stikine

NORTHERN BC BUSINESS ADVANTAGE

Northern British Columbia is a strategically located, resource-rich economy with many competitive advantages and incentives for business.



Welcome to the Nass Valley

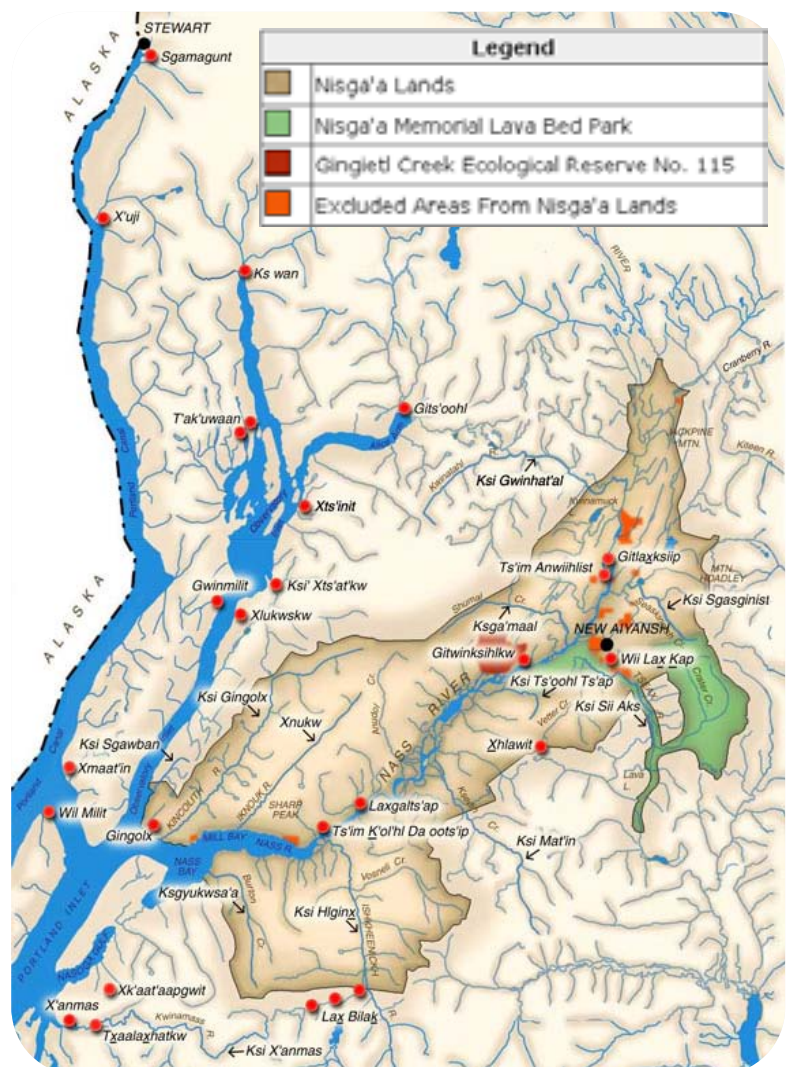
Home of BC's ground-breaking, self-governing First Nation

The Nass River flows through a land of sacred mountains and dense forests on Canada's Pacific coast. The Nisga'a people have lived in the Nass Region since before recorded time. Today, the Nisga'a Nation includes more than 6,400 people residing in four Nisga'a villages, throughout northwest British Columbia, and across North America. A proactive and progressive First Nation, the Nisga'a Nation is open to new economic opportunities, partnerships, and ideas. The Nass Region is open for business.

The Nisga'a Nation is a leader in governance, accountability, and consensus building. While other jurisdictions remain stalled in unsettled land claims negotiations, the Nisga'a Nation brought home British Columbia's first modern treaty in May 2000. A landmark in the relationship between Canada and its Aboriginal peoples, the Nisga'a Treaty recognizes Nisga'a Lands (2,000 km²) and opens the door for joint economic initiatives in the development of the Nass Region's vast natural resources. An example of trust, cooperation, and determination, the Nisga'a Treaty is being studied the world over. In 2010, the Nisga'a Nation led again by opening up specific Aboriginal lands for private sale—a first in Canada.

The Nisga'a Nation is represented by Nisga'a Lisims Government (NLG), a modern, forward thinking administration designed to assure democracy, transparency, and accountability. Proud British Columbians and Canadians, Nisga'a citizens are responsible for building and maintaining their own local institutions. At the same time, Nisga'a lawmaking authority is concurrent with federal and provincial authority.

The Nisga'a Nation is a fully integrated part of northwest British Columbia's economy, where fishing and forestry are the primary economic drivers. One of the healthiest river systems in the world, the Nass River is the spawning grounds of five species of wild salmon, steelhead, and oolichan. NLG and Canada manage the Nass River salmon fishery to preserve the resource and support a modern, sustainable fishing industry. NLG also



manages all surface, forest, and mineral rights and resources on Nisga'a Lands, including high-quality cedar, hemlock, Sitka spruce, and pine mushrooms—a popular delicacy in Asia.

In the Nass Region, resource industries are complemented by the government, education, and healthcare sectors. Significant transportation and infrastructure improvements have brought new jobs and skills while tourism and telecommunications offer the promise of expanding and diversifying the economy.

To ensure the separation of government and commercial interests, the Nisga'a Nation created Nisga'a corporations to fulfill specific needs, such as marketing fish, managing forest resources, building telecommunications infrastructure, and promoting tourism. These businesses are managed through the Nisga'a Commercial Group of Companies. Wholly owned by the Nisga'a Nation, the Nisga'a Commercial Group of Companies is professionally managed by an independent Board of Directors made up of leading members of B.C.'s business community who provide a wealth of experience and candid advice.

The Nisga'a Nation is a willing and able Aboriginal partner on Canada's Pacific coast. From small, local business ventures to international alliances, NLG actively supports and facilitates new economic initiatives throughout the Nass Region.



Mitchell Stevens

President, Nisga'a Lisims Government

For inquiries regarding business and economic development in the Nisga'a Nation and the Nass Region, contact:

Bertram Mercer, Economic Development Manager

Nisga'a Lisims Government

2000 Lisims Drive, P.O. Box 231, New Aiyansh, B.C., Canada V0J 1A0

250.633.3000 / 1.866.633.0888

bertramm@nisgaa.net

www.nisgaalisims.ca

CONTENTS

1. Demographics	7
Population	7
Household Income	7
Workforce Education Attainment	7
Language Knowledge	8
2. Labour Force	9
Employment by Industry	9
Top Employers	10
Average Income By Occupation – Northern BC	10
Labour force	12
Employment Rate	12
Labour Participation Rate	12
Commuting	12
3. Payroll Costs.....	13
Workers Compensation – 2006	13
Employment Insurance – 2009	13
Social Insurance (Canada Pension Plan) – 2010	14
4. Higher Education	15
Four Year Institutions	15
Training Services	15
5. Transportation	16
Major Transportation Routes	16
Highways	18
Northern Corridor Specifications	19
Railroads	20
Commercial Airports	21
Ports	23
Port Shipping Distances	26
6. Industrial & Commercial Land Use – Gitlaxt’aamiks	27
Light Industrial Development	27
Local Permit Approvals – 2009	27
7. Utilities	29
Water System	29
Waste Water System – Gitlaxt’aamiks	29
Landfill and Waste Management	29

Licensed Hazardous Materials Disposal	29
Electric Power	30
Telecommunications	32
8. Business Support Services	33
9. Government	34
First Nations government	34
Municipal Government	34
Regional District	35
Provincial	35
Provincial Government Representation	35
Federal Government Representation	36
10. Housing	36
Housing Characteristics	36
Average Housing Values	36
11. Taxation	37
Corporate Income Tax	37
Personal Income Tax	37
Sales / Use Tax	37
Sales Tax Rate by Utility	38
Property Tax	39
12. International Resources	40
Investment and Business Support Offices	40
Financial Institutions	41
Employment Assistance	41
Air Transportation Service	42
13. Quality of Life	44
Climate	44
Culture	45
Health	47
14. Municipal Contacts	49

1. DEMOGRAPHICS

POPULATION

NASS VALLEY & AREA

Population By Age Group	Population (2006)	% Distribution
Under-18	695	27.0%
18-34	645	14.3%
35-54	685	32.2%
55-74	505	21.9%
75-Older	390	4.1%
Total:	2,920	
Median Age:	31.1	

NORTHERN BC

Population By Age Group	Population (2006)	% Distribution
0-4	19,300	6%
5-17	60,400	18.8%
18-24	30,900	9.6%
24-44	88,500	27.5%
45-64	90,700	28.2%
65+	32,200	
Total	322,000	100%

Data Source: BC Stats – Quarterly Regional Statistics “Cariboo, North Coast, North East, Nechako” – http://www.bcstats.gov.bc.ca/pubs/pr_qrs.asp

HOUSEHOLD INCOME

Household Income	2006
Number of Households	530
Median Income - All Families	\$28,908 (\$CDN)

Data Source: Census Community Profile – <http://www12.statcan.gc.ca/census-recensement/2006/dp-pd/prof/92-591/index.cfm?Lang=E>

WORKFORCE EDUCATION ATTAINMENT

Level of Education	# Attained	%
High School Diploma Only	340	27%
College/University Certificate/Diploma	200	16%
Less than High School Diploma	445	35%
Apprenticeship/Trades Certificate/Diploma	175	14%
University Bachelors Degree	55	4%
University Graduate Degree/Certificate	40	3%
University Medical/Dentistry/Optomety Degree	20	2%

Data Source: StatsCan – 2006 Census – “Education”

LANGUAGE KNOWLEDGE

Languages Spoken	Citizens
English	1260
Nisga'a	255
Gitksan	10
Japanese	10
North Slave	10

Data Source: StatsCan – 2006 Census – “Mother Tongue”



2. LABOUR FORCE

EMPLOYMENT BY INDUSTRY

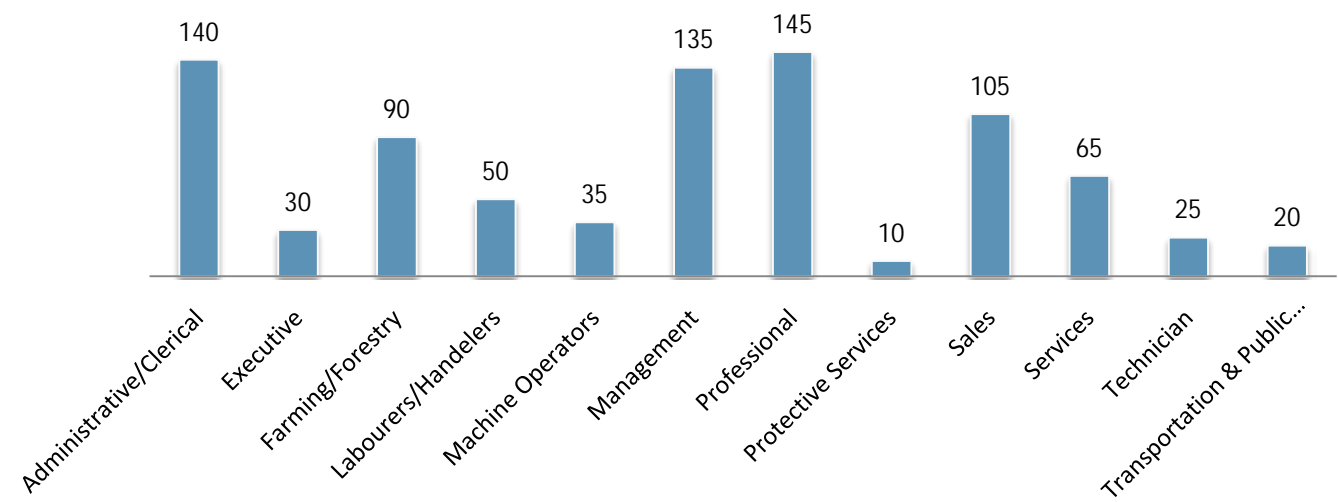
NORTHERN BC

Sector (Industry)	Number
Other services	227,465
Business services	32,665
Educational services	24,840
Construction	20,770
Wholesale trade	17,940
Finance and real estate	14,725
Health care	12,365
Agriculture	12,050
Retail trade	5,865
Manufacturing	5,285
Total	373,970



Data Source: Stats Canada 2006 Regional Distict Profile; Bulkley Nechako, Cariboo, Fraser Fort George, Central Coast, Skeena Queen Charlotte, Kitimat Stikine, Stikine, Northern Rockies, Peace River – <http://www12.statcan.ca/census-recensement/2006/dp-pd/prof/92-591/index.cfm?Lang=E>

EMPLOYMENT BY OCCUPATION



Data Source: StatsCan – 2006 Census – “Occupation”

TOP EMPLOYERS

Company	Product/Service	# of Employees	Ownership	Website
Nisga Lisims Government	Government	130	Public	www.nisgaalisims.ca
Nisga Valley Health Board	Healthcare	60	Public	www.nisgahealth.bc.ca
School District 92	Education	15	Public	www.nisgaa.bc.ca
Nisga Commercial Group	Tourism	62	Private	www.ncgtourism.ca
Greenville Enterprises Inc.	Forestry	40	Private	www.nnkn.ca/node/21263
Laxgalt'sap Village Government	Government	18	Public	www.laxgalt'sap.com
Gingolx Village Government	Government	25	Public	www.gingolx.ca
Gitlaxt'aamiks Village Government	Government	50	Public	www.nisgaalisims.ca/gitlaxtaamiks-capital-nisgaa-nation
Gitwinksihlkw Village Government	Government	13	Public	www.nisgaalisims.ca/gitwinksihlkw-home-nass-river

Data Source: Nisga'a Lisims Government – www.nisgaalisims.ca

AVERAGE INCOME BY OCCUPATION – NORTHERN BC

Occupation	Average wage (\$/Hour)(\$CDN)	Effective Date
Administrative Clerks	17.57	2007
Bookkeepers	17.51	2008
Business Development Officers	20.09	2008
Carpenters	22.09	2007
Civil Engineers	34.19	2007
Commercial Drivers	25.15	2008
Computer Engineers	35.11	2006
Crane Operators	25.27	2007
Drafting Technicians	22.02	2008
Electrical Engineers	41.5	2006
Forestry Technicians	20.91	2007
Geological Engineers	49.04	2006
Heavy Duty Equipment	23.09	2007
Heavy Equipment Operators	24.46	2007

Industrial & Manufacturing Engineers	34.62	2006
Industrial Electricians	29.27	2007
Labourers in Wood, Pulp and Paper Processing	20.59	2007
Labourers, Processing Manufacturing and Utilities	15.14	2007
Logging Machinery Operators	24.6	2007
Machinists	26.28	2007
Mechanical Engineers	36.39	2006
Mine Labourers	18.85	2007
Mining Engineers	50.14	2006
Petroleum Engineers	64.83	2006
Primary Production Managers	45.32	2007
Purchasing Managers	38.7	2007
Sales Representatives	15.45	2007
Senior Managers	33.01	2007
Shippers and Receivers	15.04	2007
Steamfitters	26.7	2007
Trade Helpers and Labourers	18.84	2007
Truck Drivers	24.32	2007

§ For a complete list of Wages and Salaries in Northern BC visit the link below
http://www.labourmarketinformation.ca/standard.aspx?ppid=81&lcode=E&prov=59&gaid=25567&occ=&search_key=5&search_type=&employer_potential=&new_search=&total_records=522



LABOUR FORCE

	Number
Total Population 15 and over	1,340
In Labour Force	900
Employed	585
Unemployed	315

Data Source: StatsCan – 2006 Census – “Community Profile”

EMPLOYMENT RATE

	% of Population
Unemployment Rate	36.7%
Labour Participation	67.8%

Data Source: StatsCan – 2006 Census – “Community Profile”

LABOUR PARTICIPATION RATE

	Labour Participation Rate
Male	71.4%
Female	61.2%

Data Source: StatsCan – 2006 Census – “Community Profile”



COMMUTING

Place of Residence	Place of Work	# of People
Gitwinksihlkw	New Aiyansh	25
Gingolx	Gingolx	45
New Aiyansh	New Aiyansh	205

Data source: Stats Canada – Census 2006 – “Commuting Flow” – <http://www12.statcan.ca/census-recensement/2006/dp-pd/tbt/Rp-eng.cfm?TABID=1&LANG=E&A=R&APATH=3&DETAIL=0&DIM=0&FL=A&FREE=0&GC=0&GID=5951043&GK=0&GRP=1&O=D&PID=90656&PRID=0&PTYPE=88971,97154&S=0&SHOWALL=0&SUB=0&Temporal=2006&THEME=76&VID=0&VNAMEF=&VNAMEF=>

3. PAYROLL COSTS

WORKERS COMPENSATION – 2006

		Notes
Average Cost of All Manufacturing Per \$100 Payroll	\$1.90 CDN	Rates set by employer's business activity. Applies up to maximum gross earnings of \$62,400(CDN) per year.
Average Rate for Office Workers Per \$110 Payroll	\$0.30 CDN	There is no separate rating for office occupations in BC– the applicable industry rating applies to all workers. Rates for Business Services range from \$0.08-\$0.70 per \$100 of payroll. Average of \$0.30(CDN).
Maximum Weekly Benefit (Net)	\$808.16 CDN	Maximum per employee set at 90% of average net earnings (after deductions for income taxes, Canada Pension Plan & Employment Insurance), up to maximum wage of \$62,400 per year(CDN).

EMPLOYMENT INSURANCE – 2009

		Notes
Taxable Base		Based on gross payroll up to a gross per worker salary of \$42,300 per year(CDN).
Percentage Rate (Employer Premium)		
§ Employee Rate	1.73%	Maximum annual contribution per worker is \$731.79(CDN).
§ Employer Rate	2.422%	Maximum annual contribution per worker is \$1,024(CDN).
§ Maximum Weekly Benefits	\$447.00 CDN	



SOCIAL INSURANCE (CANADA PENSION PLAN) – 2010

		Notes
Taxable Base	Gross Payroll \$3,500 CDN	Based on annual gross salary up to \$47,200, basic exemption of \$3,500. Both employers and employees are required to contribute to the Canada Pension Plan.
Employee/Employer Contribution	4.95%	Employer premium equal to employee premium
Maximum Annual Employer Contribution Per Employee	\$2,163.15 CDN	Employer contribution matches employee contribution.
Rate	4.95%	
Maximum Annual Self Employed Contribution	\$4,326.30 CDN	

Data Source: TaxTips.Ca – <http://www.taxtips.ca/cppandei.htm>

Data Source: WorkSafeBC – www.worksafebc.com



Nisga'a House of Wisdom

Wilp Wilxo'oskwhl Nisga'a Institute (WWNI), Nisga'a House of Wisdom, offers post-secondary programs in Nisga'a communities and select urban centres. Serving both Nisga'a and non-Nisga'a students, WWNI is affiliated with the University of Northern British Columbia, Northwest Community College, and Royal Roads University for the delivery and accreditation of its courses and programs, including: Bachelor of Arts (First Nations Studies), vocational and technical training, university/college preparation, Masters Degree (Nisga'a Language and Culture), Carpentry/Timber Framing, and continuing education programs.

4. HIGHER EDUCATION

FOUR YEAR INSTITUTIONS

Institution	Northwest Community College
Campus/Address	Nass Campus 3001 T'sol Tsap Avenue PO Box 70, Gitwinksihlkw, B.C. VOJ 3T0 Tel: (250)633-2922
Other Campuses	Terrace (Main Campus), Hazelton, Houston, Kitimat, New Aiyansh, Prince Rupert, Queen Charlotte City, Smithers, Stewart
Website	www.nwcc.bc.ca
Driving Distance from Community	Campus in Gitwinksihlkw
Enrolment (2003/04):	
Total	3,078
Full-Time	1,616

Data Source: Northern Development Research

Institution	University of Northern British Columbia
Campus/Address	UNBC Campus Northwest 4837 Keith Avenue Terrace, BC V8G 1K7 Canada Tel: (250) 615-5578
Other Campuses	Prince George (main), Fort St. John, Quesnel
Website	www.unbc.ca
Driving Distance from Community	Campus in Terrace (101 km)
Enrolment (2008/09):	4,332

Data Source: Northern Development Research

TRAINING SERVICES

Institution	Category	Address
The Nisga House of Wisdom	First Nation Studies	3001 Ts'ooht Ts'ap Avenue, PO Box 70, Gitwinksihlkw, B.C. V0J 3T0

Data Source: Nisga'a Lisims Government – www.nisgalisims.ca

5. TRANSPORTATION

MAJOR TRANSPORTATION ROUTES

PACIFIC GATEWAY

British Columbia's ports in Vancouver, Kitimat, Stewart and Prince Rupert are Asia's closest ports of entry on the west coast of North America, up to 58 hours closer than the ports of Los Angeles and Long Beach.

Canadian ports and airports are seamlessly integrated with road and rail connections to all major U.S. economic centers. British Columbia is the only gateway on the west coast of the Americas served by three transcontinental railways. Today, Canada's Pacific Gateway is an integrated, secure, reliable transportation network that includes world-class airports, seaports, railways, roadways and border crossings, bringing Canada and the North American market to Asia and the world. Canada's Pacific Gateway, through British Columbia's ports in Vancouver, Kitimat, Stewart and Prince Rupert, offers Asian shippers the most direct route between Asia and North America.

Canada's Pacific Gateway is a strong commitment by government and industry partners to make British Columbia's ports the preferred gateway for Asia-Pacific trade, with the most competitive port system and supply chain on the west coast of the Americas. This commitment builds on Canada's longstanding and strong cultural and economic ties with Asia. In the emerging new global economy, Canada's Pacific Gateway is a gateway to the future.



NORTHERN CORRIDOR

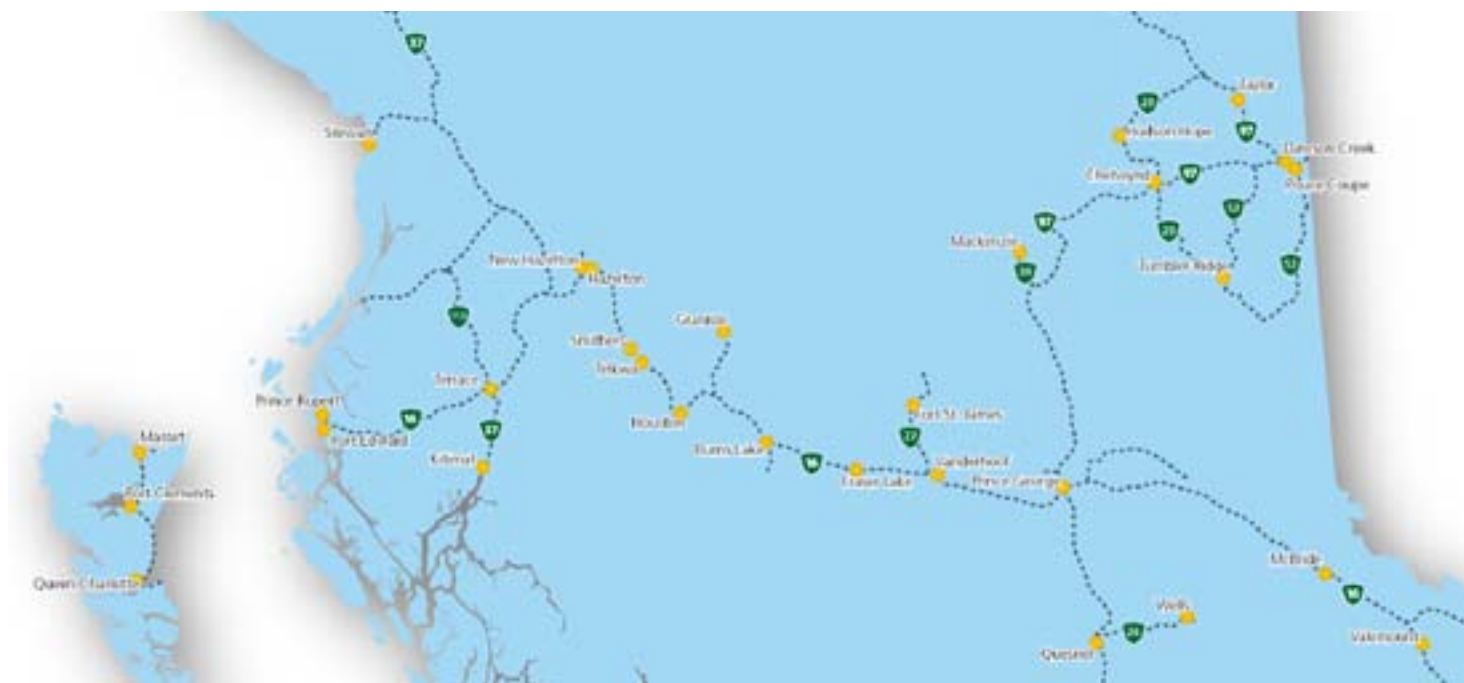
The Northern Corridor spans over half of continental Canada and reaches well into the heartland of North America south of Chicago, USA. It travels through the lowest elevations of the Americas great continental divide, also known as the “Yellow Head Pass,” and forms the straightest, shortest, flattest route for Asian- North American trade. Three Northern British Columbia ports provide efficient access to this corridor; Kitimat, Stewart and Prince Rupert. Each port offers unique advantages and services that meet the needs of the region and international trade.

Trans-continental rail, Trans Canada Highway and direct air service into international Air Hubs are in place. The corridor services business covered by the North American Free Trade Agreement, through a variety of break bulk and container services in ports operated by governments and those run by private port interests.

The Northern Corridor is less impeded by road closures, significant weather patterns and avalanches than the Southern Canadian corridor. It provides “one less day” shipping advantage to or from Asia compared to all other North American Port locations including Vancouver and all USA pacific Ports.

Existing trade in Kitimat and Prince Rupert include aluminum and paper shipped via privately owned break-bulk terminals, transshipment of petrochemicals through privately owned facilities, barge service and container port services. Growth is expected in energy exports including liquid natural gas, petroleum, and container capacity.

Canadian National Rail (CN Rail) reaches well into the heartland of America with shipping agreements in place with major US rail carriers. CN has made significant investments in the Northern Corridor rail line including extended sidings, upgrades to signal systems, increased bridge and tunnel clearances. The corridor is serviced by five international airports and four northern airports with Prince George offering international services. The largest passenger service airport west of Prince George and north of British Columbia's Okanagan region is the Terrace-Kitimat Northwest Regional airport.



HIGHWAYS



NORTHERN CORIDOR SPECIFICATIONS

Commercial Vehicle Without Permit	Specifications
Maximum Width	2.59 meters
Maximum Height	4.15meters
Maximum Vehicle Weights	
Super B	63,500 kgs
Single Axel	9,100 kgs
Tandem Axle (set)	17,000 kgs
Tridem Axle (set)	24,000 kgs

Commercial Vehicle With Permit	Specifications
Maximum Width	4.4 meters
Maximum Height	4.72 meters
Maximum Vehicle Weights	
Super B	64,000 kgs
Single Axel	9,100 kgs
Tandem Axle (set)	23,000 kgs
Tridem Axle (set)	29,000 kgs

OVERHEAD CLEARANCE

Yellowhead Highway 16 from BC Border to Prince Rupert	Clearance (meters)
§ Khyex River Bridge	5.95m
§ Kitsequcla Overpass	5.7m
§ Tete Jaune underpass	4.96m
Highway 37 from Hwy 16 North to Yukon Border	
§ Irving River Bridge #2	5.74m
§ Devil Creek Bridge	5.74m
Highway 37 from Hwy 16 South to Kitimat	
§ Williams Creek Bridge	4.97m
§ Hirsch Creek Bridge	4.72m
§ Kitimat River Bridge	5.08m
Highway 37A from Hwy 37 To Stewart	
§ No Clearances	

PROVINCIAL PERMIT CENTRE

For more information on receiving a commercial vehicle permit please contact **1-800-559-9688**. The core hours of service are from 5am to 10pm, seven days a week and most statutory holidays. The 1-800 number is available to callers anywhere in Canada or the United States. Permits available through this line include:

- § non-resident commercial vehicle permits
- § term oversize and overweight permits
- § single trip oversize and overweight permits
- § motor fuel tax permits
- § highway crossing permits
- § extra-provincial temporary operating permits

HIGHWAY DISTANCES FROM GITLAXT'AAMIKS

Metro Area	Distance (Km's)
Terrace	101 km
Prince Rupert	239 km
Prince George	619 km
Kamloops	1,138 km
Edmonton	1,359 km
Vancouver	1,219 km
Calgary	1,405 km
Victoria	1,246 km
Seattle	1,442 km
Portland	1,656 km



RAILROADS

CN Rail	www.cn.ca
Main or Branch Line:	Branch and Main
Shortline or National:	National and Shortline
Distance to Nearest Switching Yard:	101 km
Capabilities	Cargo-Bulk, Container, Liquid, Multi Commodities

VIA Rail	www.viarail.ca
Main or Branch Line:	Branch and Main
Shortline or National:	National and Shortline
Distance to Nearest Switching Yard:	101 km
Capabilities	Passenger

Data Source: Northern Development Research



COMMERCIAL AIRPORTS

Northwest Regional Terrace-Kitimat Airport	Weekly Flights to Greater Vancouver
Hub Status	Commercial
Distance From Community	Located in Community
Hours of Operation	24 Hours
Approved Capital Expansion	Not Available
Customs Point of Entry	No
Foreign Trade Zone	No
Full Instrumentation	Yes
No. of Runways	2
Runway Length	2,268m, 1,637m
Carriers	Air Canada Jazz, Hawkair, Central Mountain Air
No. of Days Closed From Bad Weather in last 3 yrs	0
Weekly Non-Stop Flights	46
Flights to Largest Cities Served	
§ Greater Vancouver	34



North West Regional Airport

Serves over 100,000 passengers annually, making it the largest airport west of Prince George and north of British Columbia's Okanagan.

Source: District of Kitimat

Smithers Regional Airport	Weekly Flights to Greater Vancouver
Hub Status	Commercial
Distance From Community	Located in Smithers
Hours of Operation	6:30 am- 6:30 pm
Approved Capital Expansion	Runway extension to 2,286 m
Customs Point of Entry	No
Foreign Trade Zone	No
Full Instrumentation	n/a
No. of Runways	1
Runway Length	1,524 m
No. of Days Closed From Bad Weather in last 3 yrs	n/a
Weekly Non-Stop Flights	44
Flights to Largest Cities Served	16
Greater Vancouver	16
Carriers	Air Canada Jazz , Central Mountain Air, Hawkair

Data Source: Northern Development Research



PORTS

PORT OF PRINCE RUPERT

Port of Prince Rupert

Distance from Prince Rupert	Located adjacent to the community
Location of Port	Prince Rupert
Terminals	Fairview (Container) Terminal, Ridley Terminals, (coal, wood pellets), Prince Rupert Grain, Northland Cruise Terminal
Type of Port	Ocean
Channel Depth	35-55 meters
Shallow Water Barging Facilities	Yes
Deep Water Barging Facilities	Yes
General Cargo Facilities	Yes
Containerized Facilities	Yes
Refrigerated Container Facilities	Yes
Cruise Ship Facilities	Yes
Storage Facilities	Yes
Highway Serving Port	#16
Railway Serving Port	CN Rail
Types of Services:	Bulk/break-bulk: Coal, Petroleum Coke, Wood Pellets, Grain, Logs,
Imports	Retail (including electronics, apparel, furniture, auto parts); petroleum products; industrial inputs (tiles, glass)
Exports	Midwest – specialty crops; scrap metal, recycled paper British Columbia – Forest products (lumber, pulp, logs); aluminum, seafood
Shipping Lines	Cosco, Hanjin, Yang Ming, K-Line, Quickload Transloading Services, Shipping Agents, GW Nickerson Co., Northcoast Shipping, Rupert Marine Shipping, Tidal Transport & Trading Ltd.



PORT OF KITIMAT

Private Port of Kitimat

Location of Port	Kitimat
Terminals	Rio Tinto Alcan - Break Bulk Terminal Methanex Petrochemical Terminal Eurocan Breakbulk Terminal
Type of Port	Deep Sea
Channel Depth	45- 200 fathoms,18-185 Meters (59-607 Feet)
Turning Basin	1.1 - 2.2 nautical miles
Shallow Water Barging Facilities	Yes
Deep Water Barging Facilities	Yes
General Cargo Facilities	Yes
Containerized Facilities	No
Storage Facilities	Yes
Highway Serving Port	Highway # 16 via #37
Railway Serving Port	CN Rail
Types of Services	Bulk/ Break-bulk, Methanol, Amonia condensate, Pitch, Alumina ,Bauxite condensate
Imports	Pitch, Alumina, Bauxite Condensate, Methanol
Exports	Kraft Paper, Aluminum Sheeting
Shipping Lines	Waterfront Shipping, Gearbulk
Shipping Agents	GW Nickerson Co., TNC Canada
Customs Brokers	GW Nickerson Co., Moore E T S Services
Tug & Barge	SMIT Marine, Seaspace International



CUSTOM POINT OF ENTRY

Canadian Border Services Agency	Prince Rupert
Type of Entry Point	Port
Location	368-309 2nd Ave West Prince Rupert BC Canada V8J 3T1 Phone (250) 627-3003

Data Source: City of Prince Rupert – www.princerupert.ca

Data Source: City of Kitimat – www.kitimat.ca

Data Source: Northern Development Research

PORT SHIPPING DISTANCES

The NW Transportation and Trade Corridor ports (Kitimat and Prince Rupert, Stewart) are between 1 and 1 1/2 day closer to general Asia Pacific markets than the Ports in British Columbia's lower mainland; and the Vancouver Ports. The Southern Ports are closer to the Panama Canal and subsequently, the Atlantic. The following table is in nautical miles. The Time/Speed/Distance Calculations are at 16.1439 Kn/Hr., the average speed The Port of Vancouver uses for calculating their shipping to Yokohama, Hong Kong, Kaohsiung (Taiwan) and Xingang (China). Deep-sea vessels travel at various speeds between 14Kn/Hr and 20Kn/Hr. The 'great circle shipping route' to Asia from North America has well documented ocean currents and weather/wind patterns which allows for accurate estimates.

	Kitimat	Prince Rupert	Stewart	Vancouver	Los Angeles	Yokohama (Japan)	Hong Kong	Kaohsiung Kang(Taiwan)	Xingang (China)
Kitimat	--	121 NM 7.5 Hrs	264 NM 17 Hrs	400 NM 1 Day	1,391 NM 3.5 Days	3,941 NM 10 Days	5,444 NM 14 Days	6,,187 NM 16 Days	6,187 NM 16 Days
Prince Rupert	121 NM 7.5 Hrs	--	123 NM 10 Hrs	477 NM 1.2 Days	1,432NM 3.6 Days	3,810 NM 9.8 Days	5,323 NM 13.7 Days	6,110 NM 15.7 Days	6,110NM 15.7 Days
Stewart	264 NM 17 Hrs	123 NM 10 Hrs	--	573 NM 1.5 Days	1,529 NM 4 Days	3,896 NM 10.3 Days	5,406 NM 14.1 Days	5,155 NM 13.4 Days	4,749 NM 12.5 Days
Vancouver	400 NM 10 Day	477 NM 1.2 Days	573 NM 1.5 Days	--	991 NM 2.5 Days	4,262 NM 11 Days	5,763 NM 15 Days	6,587 NM 17 Days	7,578 NM 20 Days
Los Angeles	1,391 NM 3.5 Days	1,432 NM 3.6 Days	1,529 NM 4 Days	991 NM 2.5 Days	--	4,839 NM 12.5 Days	6,380 NM 18 Days	7,578 NM 20 Days	8,959 NM 23 Days
Yokohama	3,941 NM 10 Days	3,810 NM 9.8 Days	3,896 NM 10.3 Days	4,262 NM 11 Days	4,839 NM 12.5 Days	--	1,585 NM 4 Days	1,335 NM 3.4 Days	1,335 NM 3.4 Days
Hong Kong	5,444 NM 14 Days	5,323 NM 13.7 Days	5,406 NM 14.1 Days	5,763 NM 15 Days	6,380 NM 18 Days	1,585 NM 4 Days	--	290 NM 18 Hrs	290 NM 18 Hrs
Kaohsiung Kang	6,187 NM 16 Days	6,587 NM 17 Days	5,155 NM 13.4 Days	6,587 NM 17 Days	7,578 NM 20 Days	1,335 NM 3.4 Days	290 NM 18 Hrs	--	227 NM 14 Hrs
Xingang	6,187 NM 16 Days	6,587 NM 17 Days	4,749 NM 12.5 Days	7,578 NM 20 Days	8,959 NM 23 Days	1,335 NM 3.4 Days	290 NM 18 Hrs	227 NM 14 Hrs	--

Source: United States Government. "Distances Between Ports" Prepared and published by the National Imagery and Mapping Agency, Bethesda, Maryland. Ninth Edition 1997. *Time/Speed/Distance Calculations at 16.1439 Kn/Hr., the average speed Vancouver Port lists to reach Yokohama, Hong Kong, Kaohsiung (Taiwan) and Xingang (China)

6. INDUSTRIAL & COMMERCIAL LAND USE – GITLAXT'AAMIKS

LIGHT INDUSTRIAL DEVELOPMENT

The Gitlaxt'aamiks Land Use Plan states that the lands on either side of Tseax Street towards the sewage lagoons are designated for Light Industrial uses. This area is accessed by Tseax Street and has an overhead single-phase power line and a sewermain. The area can be serviced with water.

Data Source: Nisga'a Lisims Government – www.nisgaalisims.ca

LOCAL PERMIT APPROVALS – 2009

Please see the [Municipal Contacts](#) section of this document and directly enquire for the following permit information:

- § Building Permit
- § Business License
- § Development Permit
- § Occupancy Permit
- § Plan Amendment
- § Re-Zoning Application
- § Subdivision Application

For information on License of Occupation for Village Land and Public Lands, please contact the Nisga'a Lisims Government at (250) 633-3000.

Data Source: Nisga'a Lisims Government – www.nisgaalisims.ca

NISGA'A LANDS MANAGEMENT

- § The Lands department of Nisga'a Lisims Government is responsible for the management of all Nisga'a Lands and land assets. This includes the approximately 2,000 sq. kms that make up Nisga'a Lands as identified in the Nisga'a Treaty.

ACQUISITION OF CROWN LAND

- § Crown land is land that is owned by the Province of British Columbia. The Province is the steward of the land and can lease, license and sell Crown land for a variety of purposes including residential, commercial, industrial, agricultural, tourism and recreational purposes.

Company	Contact	Notes
Integrated Land Management Bureau	FrontCounterBC@gov.bc.ca	Develops Crown land parcels with values up to \$2.5 million
Ministry of Tourism, Culture and the Arts	Telephone: 250 371-3952	Handles land sales related to resort development, under the All Seasons Resort Policy.
Ministry of Transportation	Telephone: 250 387-3198	Handles land sales related to public airports and port authorities and the marketing of Crown land is done through MLS Realtors

- To view properties that the Federal Government of Canada has for sale, please visit: <http://reo.pwgsc.gc.ca/public/>

7. UTILITIES

WATER SYSTEM

The water system at Gitlaxt'aamiks consists of an intake on Gitzyon Creek, a slow sand filtration treatment plant, a two-pressure zone water distribution system, a pump station, and an elevated water reservoir. A slow sand filtration plant was constructed in 1994 and consists of two filters, pipe gallery, wet well complete with pumps and chlorine injection. The treated water is stored at the community reservoir which is a bolted steel design with exterior insulation and metal cladding. The water is distributed to the community through a network of 150mm and 200mm diameter piping which is separated into two pressure zones.

For information on Gingolx, Gitwinksihlkw, and Laxgalts'ap water systems, please see the [Municipal Contacts](#) section of this document for contact information at each village office.

Data Source: Nisga'a Lisims Government – www.nisgaalisims.ca

WASTE WATER SYSTEM – GITLAXT'AAMIKS

The sewage system consists of 200mm collection piping which flows to a three cell facultative lagoon treatment facility which discharges continually to the Tseax River. The system is currently all gravity, therefore no lift stations are used. The lagoon consists of two 20,000 m³ cells and a third cell at 7,000 m³. All three cells are approximately 3.0m deep. Treated effluent is discharged into the Tseax River through a gravity main.

For information on Gingolx, Gitwinksihlkw, and Laxgalts'ap waste water systems, please see the [Municipal Contacts](#) section of this document for contact information at each village office.

Data Source: Nisga'a Lisims Government – www.nisgaalisims.ca

LANDFILL AND WASTE MANAGEMENT

Name of Landfill	Gitlaxt'aamiks Landfill
Location	4 km north of Gitlaxt'aamiks
Capacity Left at Current Site	10-15 Years
Plans for New Capacity	No current needs for expansion

Data Source: Nisga'a Lisims Government – www.nisgaalisims.ca

LICENSED HAZARDOUS MATERIALS DISPOSAL

Name of Site	None Located Directly Within The Community
No. of Licensed Hazardous Waste Haulers Serving the Area	Government Licensed to Transport to Nearest Facility

Data Source: Nisga'a Lisims Government – www.nisgaalisims.ca

ELECTRIC POWER

Provider: BC Hydro	www.bchydro.com
Net Importer/Exporter of Power:	Net Exporter – BC Hydro generates 50,000 GWH of electricity annually.
% of Reserve Margin Including Generation & Net Purchases	8% as per WSCC guidelines plus an additional 8% surplus
Average Electrical Service Availability Index	
§ Most Recent Year	99.974
§ Last 5 Years	99.967
Name of Power Pool Membership	Formal membership in WSCC, WSPP, Power Pool of Alberta (PPA), MAPP. Also active in SPP and CalPX
Source Electric Power Deregulated	Wholesale competition allowed
Residential Customers	5.98 cents per Kwh for the first 1,350 Kwh they use over a two month billing period. Above that amount customers will pay 7.21 cents per Kwh for the balance of the electricity used during the billing period.
Business Customers	Average Cost Per kWh
General Service under 35kW for 2 Months	<i>Small business such as stores, small warehouses, offices and auto repair shops</i>
§ Basic Charge	15.48 cents per day
§ All kWh	\$0.0736 kWh
§ Minimum Charge	The Basic Charge
§ Rate Rider	0.5% Rate Rider applied to all charges, before taxes and levies.
General Service 35 kW and over for 1 month	<i>Retail stores, medium industry, manufacturing, schools, office buildings, supermarkets</i>
§ Basic Charge	15.48 cents per day
§ Demand Charge	First 35 kW for NIL Next 115 kW at \$3.77 per kW All additional kW at \$7.23 per kW
§ Energy Charge	First 14,800 kWh \$0.0736 per kWh All additional kWh \$0.0354 per kWh
§ Discounts	1.5% on entire bill if customer's electricity is metred at primary potential \$0.25 per kW if customer supplies transformation from a primary to a secondary potential. If a customer is entitled to both discounts the 1.5% discount is applied first.
§ Minimum Charge	50% of the highest maximum demand charge billed in any month within an on-peak period (1 November to 31 March inclusive) during the preceding 11 months.
§ Rate Rider	0.5% Rate Rider applied to all charges, before taxes and levies.

Industrial: Transmission Service

Mines, chemical plants, large sawmills, pulp and paper mills, large manufacturing

§ Demand Charge	\$5.036 per kVa of billing demand
§ Energy Charge	\$0.02462 per kWh applied to all kWh up to and including 90% of the customers baseline load (CBL) in each billing year. \$0.07360 per kWh applied to all kWh above 90% of the CBL in each billing year.
§ Minimum Charge	\$5.036 per KVa of billing demand per billing period
§ Rate Rider	0.5% Rate Rider applied to all charges, before taxes and levies.

Data Source: Northern Development Research



TELECOMMUNICATIONS

Name of Provider	Telus
Address	#5-3777 Kingsway Burnaby, BC V5H 3Z7
Website	www.telus.net
Contact#	
§ Residential	250 310 2255
§ Business	250 310 3100

Service Characteristics of The Office:

§ Switch Technology	Digital
§ Fiber Service provided	No
§ 100 Mbps LAN Service Available	No
§ Monitoring- Remotely or On-Site	Remotely
§ ISDN Available	No
§ ADSL Available	No
§ ADSL Available From Switch	No
§ Central Office on Self-Healing Fiber Ring	No
§ Dual Feed from Two Separate Switching Offices	No
§ Multiple Route Diversity	No

Data Source: Northern Development Research

enTel

In order to connect local business and citizens to the world, Nisga'a Lisims Government (NLG) committed to bringing high-speed Internet access to the Nass Region. To meet this challenge, NLG created enTel Communications Inc., which now brings broadband Internet access to the Nisga'a Nation and beyond.



8. BUSINESS SUPPORT SERVICES

Business Support Services

Machine Shop (Tool & Die)	1
Welding	2
Office Equipment Service & Repair	1
Temporary Employment Services	Village Governments

International Support Services

Import/Export Brokers	0
International Courier Services	Canada Post
Freight Forwarders	1

Data Source: Nisga'a Lisims Government – www.nisgaalisims.ca

Business Support Services (Terrace, BC)

Machine Shop (Tool & Die)	6
Welding	10
Office Equipment Service & Repair	3
Temporary Employment Services	1

International Support Services

Import/Export Brokers	1
International courier Services	6
Freight Forwarders	4

Data Source: Invest BC Community Profile–Terrace Area” Business Support Services”

<http://investbc.gov.bc.ca/CommunityProfiles/Pages/CommunityInfo.aspx?page=businesssupport&pCommunityID=484>



9. GOVERNMENT

FIRST NATIONS GOVERNMENT

Nisga'a Lisims Government

Form (Structure)	Chair and Directors
Number of Elected Officials	5
Chairperson	Kevin McKay

MUNICIPAL GOVERNMENT

Gitlaxt'aamiks (New Aiyansh)

Form (Structure)	Chief Councillor and Village Councillors
Number of Elected Officials	8
Chief Councillor	George Williams

Gingolx (Kincolith)

Form (Structure)	Chief Councillor and Village Councillors
Number of Elected Officials	6
Chief Councillor	Nelson Clayton

Gitwinksihlkw (Canyon City)

Form (Structure)	Chief Councillor and Village Councillors
Number of Elected Officials	5
Chief Councillor	Peter Lambright

Laxgalts'ap (Greenville)

Form (Structure)	Chief Councillor and Village Councillors
Number of Elected Officials	7
Chief Councillor	Willard Martin

REGIONAL DISTRICT

Regional District of Kitimat-Stikine

Form (Structure)	Chair and Directors
------------------	---------------------

Number of Elected Officials	12
-----------------------------	----

Chair	Harry Nyce
-------	------------

PROVINCIAL

Government of British Columbia

Form (Structure)	British Parliamentary
------------------	-----------------------

Number of Elected Officials	79
-----------------------------	----

How Often Does Legislature Convene	2009- Feb, Mar, Apr, May, Oct. Nov
------------------------------------	------------------------------------

PREMIER

Name	Gordon Campbell
------	-----------------

Affiliation	British Columbia Liberal Party
-------------	--------------------------------

Year Elected	May 2009
--------------	----------

Current Term Expiration	4 Years
-------------------------	---------

Allowed to Run for Another Term	Yes
---------------------------------	-----

Next Election Date	2013
--------------------	------

PROVINCIAL GOVERNMENT REPRESENTATION

Name of Member of Legislative Assembly (MLA)	Robin Austin
--	--------------

Total Members of Legislative Assembly	1
---------------------------------------	---

Electoral District	Skeena
--------------------	--------

Party Affiliation	New Democratic Party
-------------------	----------------------

FEDERAL GOVERNMENT REPRESENTATION

Name of Member of Parliament (MP)	Nathan Cullen
Electoral District	Skeena-Bulkley Valley
Year Elected	October 14, 2008
Party Affiliation	New Democratic Party

SENATORS

No. of Appointed Officials	In Canada there are ordinarily 105 Senators appointed by the Governor General on the advice of the Prime Minister.
----------------------------	--

10. HOUSING

HOUSING CHARACTERISTICS

Dwelling Type	#	% of Total Dwelling
Single-detached houses	277	70%
Semi-detached houses	20	5%
Apartments, duplex	0	0%
Other dwellings	98	25%
Number of owned dwellings	265	74%
Number of rented dwellings	95	26%
Number of dwellings constructed before 1986	165	42%
Number of dwellings constructed between 1986 and 2006	230	58%
Total # of Private Dwellings	395	100%

Data Source: StatsCan – 2006 Census – “Community Profile”

AVERAGE HOUSING VALUES

Municipality	Single Family Homes	Multi-Family Homes	Total Property Tax & Charges
Nass Valley	\$130,000-150,000	-	Nisga Lisms Government will begin collecting property taxes in 2013.

Data Source: StatsCan – 2006 Census – “Community Profile”

11. TAXATION

CORPORATE INCOME TAX

	Small Business	Manufacturing	Non-Manufacturing
Federal			
§ Rate	11%	19.5%	19.5%
§ Formula (Sales, Property & Payroll)	n/a	n/a	n/a
§ Accelerated Depreciated Permitted	Yes	Yes	Yes
Provincial			
§ Rate	3.5%	11.0%	11.0%
§ Formula (Sales, Property & Payroll)	Sales & Payroll	Sales & Payroll	Sales & Payroll
§ Accelerated Depreciated Permitted	No	No	No
Local			
<i>British Columbia has no local taxes</i>			
Total Federal and Provincial Corporate Income Tax	14.5%	30.5%	30.5%

PERSONAL INCOME TAX

	Federal	State/Provincial	Local
Earned Income	15 – 29%	5.24 – 14.7%	0%
Unearned Income (e.g. Dividends)	0 – 14.55%	0 – 3.92%	0%
Capital Gains	7.5 – 14.5 %	2.08 – 7.35%	0%

SALES / USE TAX

	Rate	Notes
Harmonized Sales Tax	12%	HST on business inputs is fully recoverable
Local	0%	BC has no local sales tax
Total (Effective Combined Rate) Business	7%	Net of GST 0% for production machinery and equipment for eligible manufacturers

SALES TAX RATE BY UTILITY

	Yes/No	Rate	Notes
Electric Power	Yes	12%	HST is fully recoverable
Natural Gas	Yes	12%	HST is fully recoverable
Fuel Oil	Yes	12%	HST is fully recoverable
Water	No	0%	-
Sewer	No	0%	-
Hazardous Waste Disposal	Yes	12%	HST is fully recoverable

TELEPHONE SUBJECT TO SALES/USE TAX

	Yes/No	Rate	Notes
Local	Yes	12%	HST is fully recoverable
Long Distance	Yes	12%	HST is fully recoverable

MACHINERY AND EQUIPMENT SUBJECT TO SALES/USE TAX

	Yes/No	Rate	Notes
Production	No	0%	-
Non-Production	Yes	12%	HST is fully recoverable
Pollution Control	Yes	12%	HST is fully recoverable
Office Equipment & Fixtures	Yes	12%	HST is fully recoverable

SALES/USE TAX ON TANGIBLE PROPERTY

	Yes/No	Rate	Notes
Office Building Construction Materials	Yes	12%	HST is fully recoverable
Industrial Building Construction Materials	Yes	12%	HST is fully recoverable
Manufactures Raw Materials	No	0%	-
Standard Software	Yes	12%	HST is fully recoverable
Custom Software	Yes	12%	HST is fully recoverable

SALES/USE TAX ON INTANGIBLE PROPERTY

	Yes/No	Rate	Notes
Accounts Receivable	No	0%	-
Capital Stock	No	0%	-
Stock/Bond Transaction Fee	No	0%	-

PROPERTY TAX

Levy	Residential	Utility	Major Industry	Light Industry	Business	Non-Profit	Farm
General (Provincial Levy)	0.52	4.1	2.78	2.78	2.78	0.96	5.10
Regional District	1.31	4.86	4.46	4.46	3.21	1.31	1.31
Hospital	0.38	1.33	1.29	1.29	0.93	0.38	0.38
MFA	0.0002	0.0007	0.0007	0.0007	0.0005	0.0002	0.0002
BCAA	0.06640	0.5051	0.5051	0.1987	0.1987	0.0664	0.0664
School	3.9343	14.40	6.80	6.80	6.80	3.5	6.8
TOTAL	6.211	25.196	16.836	15.525	13.919	6.216	13.657

Data Source: Nisga'a Lisims Government – www.nisgaalisims.ca

Property Tax rates effective 2010, Property Tax rates per **\$1000 Assessed** Personal Property (M&E, Inventory, Other)
Municipal Note: BC does not have Personal Property Taxes.



12. INTERNATIONAL RESOURCES

INVESTMENT AND BUSINESS SUPPORT OFFICES

Terrace Chamber of Commerce

Address	4511 Keith Avenue, Terrace, B.C. V8G 1K1
Phone Number	250-635-2063
E-Mail	smann2@telus.net

Northern Development Initiative Trust

Contact Name	Brodie Guy, Economic Development Manager - Northwest
Address	301 – 1268 Fifth Avenue, Prince George BC V2L 3L2
Phone Number	(250) 561-2525
E-Mail	brodie@northerndevlopment.bc.ca

Community Futures 16/37

Address	204 - 4630 Lazelle Avenue Terrace BC V8G 1S6
Phone Number	250 635 5449 1 800 663 6396
Webpage	http://www.1637cfdc.bc.ca

BC Rural Secretariat – Ministry of Community Development

Contact Name	Rick Braam, Regional Project Manager
Address	Bag 5000, Smithers, BC V0J 2N0
Phone Number	(250) 847-7797
E-Mail	rick.braam@gov.bc.ca

Invest BC

Contact Name	Michael Track, Executive Director – Investor Services
Address	999 Canada Place, Suite 730, Vancouver BC V6C 3E1
Phone Number	(604) 775-2202
E-Mail	michael.track@gov.bc.ca

FINANCIAL INSTITUTIONS

Name of Company	Address	Phone #	Website
Oracle Financial Services	4546 Park Avenue, Terrace, BC	(250) 635-6146	www.oraclefinancial.ca
Northern Savings	4660 Lazelle Avenue, Terrace, BC V8G 1S6	(250) 635-0515	www.northsave.com
Investors Group	206-4716 Lazelle Avenue, Terrace, BC V8G 1T2	(250) 635-0601	www.investorsgroup.com
Sunlife Financial	4655 Lakelse Avenue, Terrace, BC V8G 1R3	(250) 635-2387	www.sunlife.ca
Business Development Bank of Canada	3233 Emerson Street, Terrace, BC V8G 5L2	(800) 663-5035	www.bdc.ca
Tricorp	344 2nd Avenue West Prince Rupert, B.C., V8J 1G6	(250) 624-3535	www.tricorp.ca/

Data Source: City of Terrace, 2009 – www.terrace.ca

EMPLOYMENT ASSISTANCE

Name of Company	Address	Phone #	Website
Employment Resources Centre	200-3219 Eby Street, Terrace, BC V8G 4R3	(250) 635-7995	www.tdcss.ca
Progressive Employment Services Ltd Fax	Suite 202 – 4716 Lazelle Ave. Terrace, B.C. V8G 1T2	(250) 615-2059	www.pesl.ca
Employment & Income Assistance	3250 Eby Street, Terrace	(866) 866-0800	www.gov.bc.ca/hsd
Northwest Training	201-4622 Greig Ave. Terrace, B.C. V8G 1M9	(250) 638-8108	www.northwestcareers.bc.ca
Terrace & District Community Services	100 – 3219 Eby St. Terrace, B.C.	(250) 635-3178	www.tdcss.ca

Data Source: City of Terrace, 2009 – www.terrace.ca

AIR TRANSPORTATION SERVICE

Largest International Airport	Prince George	
Distance to Airport	355 km	
Customs Point of Entry	Yes	
Foreign Trade Zone	No	
Full Instrumentation	Yes	
No. of Runways	3	
Runway Length	2,255 m, 1,714 m, 1,352 m	
Carriers		
§ Passenger	Air Canada Jazz, Central Mountain Air, WestJet	
§ Cargo	Air Canada, WestJet, Puralator, DHL	
§ Charter	Northern Thunderbird Air, Berry Air	
Weekly Non-Stop Flights	161	
Air Service to Northwest Regional Airport	Flight Frequency	Flight Duration
Central Mountain Air www.flycma.com	5/week; Mon, Tue, Thu, Fri, Sat Sun	1:10 hr



Largest International Airport	Vancouver	
Distance to Airport	1,150 km	
Customs Point of Entry	No	
Foreign Trade Zone	No	
Full Instrumentation	No	
No. of Runways	3	
Runway Length	3,018 m, 3,597 m, 2,225 m	
Carriers		
§ Passenger	51	
§ Cargo	18	
§ Charter	7	
Weekly Non-Stop Flights	63	
Air Service to Northwest Regional Airport	Flight Frequency	Flight Duration
Air Canada www.aircanada.com	3/day, Sunday-Friday 2/day, Saturday	1:20 hr
Hawkair www.hawkair.ca	4/day, Sunday-Friday 2/day, Saturday	2 hrs



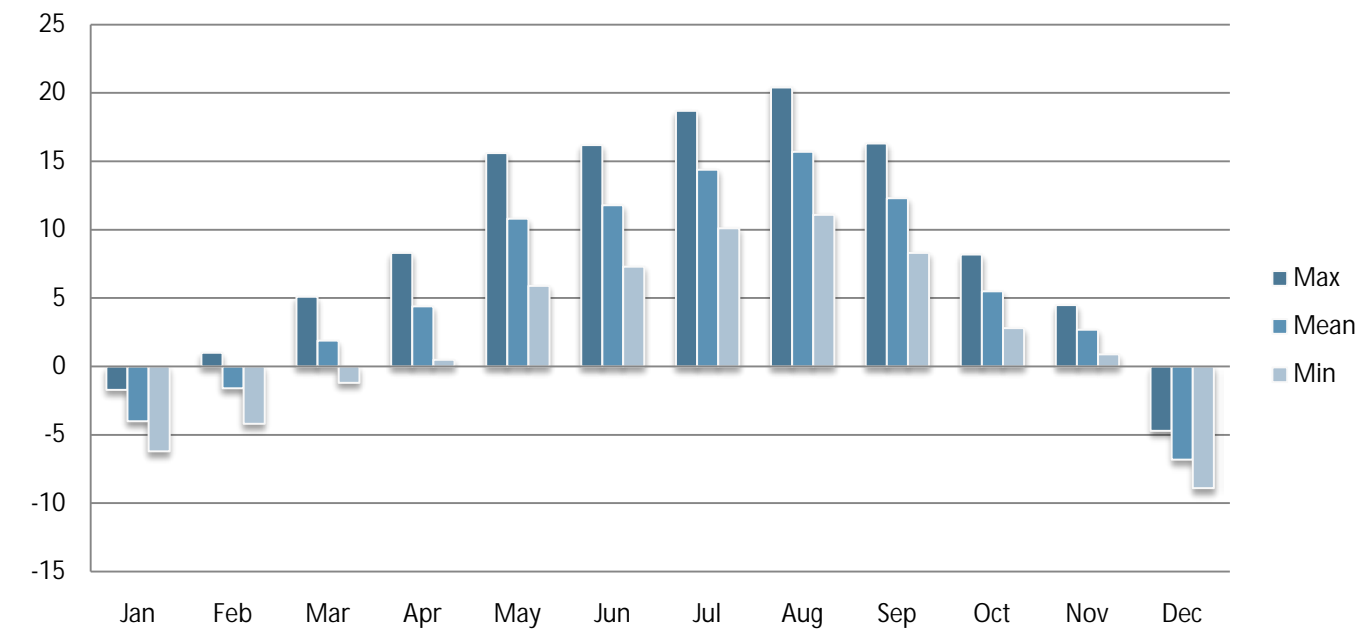
13. QUALITY OF LIFE

CLIMATE

Location: Nass Valley, BC Canada
Latitude: 55°20.581' N
Longitude: -129°07.833' W



AVERAGE TEMPERATURE IN DEGREES CELSIUS BY MONTH – 2008



Data Source: Environment Canada – “National Climate Data And information Archive” – http://www.climate.weatheroffice.ec.gc.ca/climateData/canada_e.html

CULTURE

TOP ANNUAL EVENTS

Top Events	Date(s)
Hobiye (Nisga New year)	Last Weekend of February
Nisga'a Special Assembly	April Every Second Year
CrabFest (Gingolx)	First Weekend of July

Data Source: Nisga'a Lisims Government – www.nisgaalisims.ca



CULTURAL PLACES AND AMENITIES

Amenity	Number
§ Nisga'a Museum	Laxgalt'sap
§ Nisga'a Cultural Dances	Local Dancers In Each Village

Data Source: Nisga'a Lisims Government – www.nisgaalisims.ca

Nisga'a Museum

In 2011, Nisga'a Lisims Government will open the Nisga'a Museum. Located in Laxgalt'sap (Greenville), 150 kilometres northwest of Terrace, this landmark facility will provide a home for returning Nisga'a artifacts, a place for sharing traditions and ideas, and a venue for showcasing a rich and resurgent culture.

CULTURE AND RECREATION

Amenity	Number
Number of Enclosed Shopping Malls	0
Religion	
§ Catholic Churches	0
§ Protestant Churches	4
§ Synagogues	0
§ Other Religious Institutions	0

Data Source: Northern Development Research



RECREATIONAL AMENITIES WITHIN 2 HOURS

Amenity	Activity
Nisga'a Volcano Hiking Trail	Hiking
Terrace Aquatic Centre	Swimming
Shames Mountain	Skiing
Skeena Valley Golf and Country Club	Golfing/venue for weddings, etc.
Dragon Lake Campground	Camping
Lava Lake	Canoeing/Kayaking
Kitsault Lake	Recreation Tenner
Nass River	Sport Fishing, River Tours
Gingolx	Sport Ocean Fishing
Gitlaxt'aamiks	Mushroom Tour

Data Source: Nisga'a Lisims Government – www.nisgaalisims.ca

Nisga'a Memorial Lava Bed Park

The first provincial park managed jointly by a First Nation and B.C., Nisga'a Memorial Lava Bed Park offers spectacular natural beauty and a dramatic introduction to Nisga'a culture. The Nisga'a alkali basalt flow is one of the youngest and most accessible volcanic features in the province. With a 16-site vehicle campground, picnic areas, visitor information centre, boat launches, and hiking trails, the park offers visitors a wide variety of activities and a chance to learn more about Nisga'a culture and the natural history of the region.



HEALTH

HOSPITALS

Hospital	Nisga Valley Health and Dental Centre
Teaching Hospital	No
Number of Beds	3
Outpatient Clinic	1
Contact	Nisga'a Valley Health Authority, PO Box 234, 4920 Tait Avenue, Gitlaxt'aamiks , BC V0J 1A0 (250) 633-5000

Hospital (Terrace)	Hospital Mills Memorial
Teaching Hospital	Yes
Number of Beds	52
Outpatient Clinic	1
Contact	4720 Haugland Avenue, Terrace, BC V8G 2W7, Canada (250) 635-2211

Data Source: City of Terrace, 2009 - www.terrace.ca

PHYSICIANS AND DENTISTS

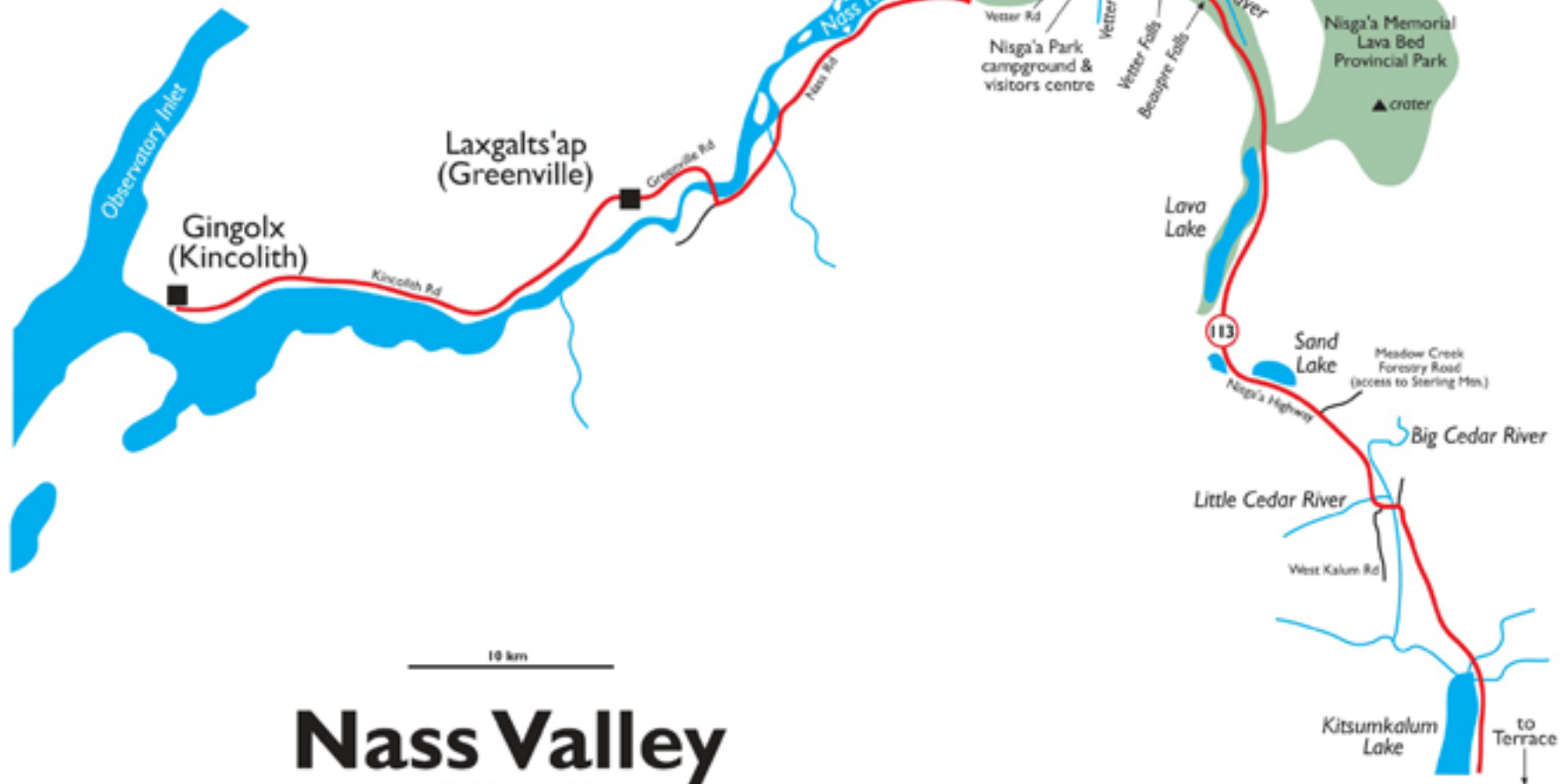
Health Providers (Nisga Valley Health Board)	Number
Physicians	3
Dentists	2
Ratio Physicians per 1000	0.9:1000
Ratio Dentists per 1000	0.5:1000

Data Source: City of Terrace, 2009 - www.terrace.ca



	Gingolx	Laxgalts'ap	Gitwinksihlkw	New Aiyansh	Nass Camp	Terrace
Gingolx		28.3	72.4	82.6	93.8	182
Laxgalts'ap	28.3		44.1	54.3	65.5	153
Gitwinksihlkw	72.4	44.1		10.2	21.4	109
New Aiyansh	82.6	54.3	10.2		11.2	99
Nass Camp	93.8	65.5	21.4	11.2		110
Terrace	182	153	109	99	110	

Driving Distances in kilometres
from www.nisgaalisims.ca



Nass Valley

Regional District of **Kitimat-Stikine** 2008

Gitwinksihlkw
(Canyon City)

Gitlaxt'aamiks
(New Aiyansh)

Nisga'a Memorial
Lava Bed
Provincial Park

▲ crater

Little Cedar River

West Kalum Rd

Kitsumkalum
Lake

to Terrace
↓

Sand Lake
Meadow Creek
Forestry Road
(access to Sterling Mtn.)

Big Cedar River

Nisga'a Highway

Lava Lake

Tseax River

Nisga'a

Spencers Rd

Nisga'a Park
campground &
visitors centre

Vetter Rd

Vetter Ck

Vetter Falls

Beaupre Falls

Nisga'a Lisims Government

Tankers Rd

Irene Meadows Rd

Nass Camp

Dragon Lake

to Cranberry Junction
(Highway 37)
*limited road maintenance
east of Nass Camp

14. MUNICIPAL CONTACTS

Gitlaxt'aamiks (New Aiyansh)

Contact Name	Darlene Morgan, Executive Director
---------------------	------------------------------------

Village Contact Information	Gitlaxt'aamiks Band Council PO Box 233 New Aiyansh, BC VOJ 1A0 Phone: (250) 633-2215 Fax: (250) 633-2271
------------------------------------	--

Gingolx (Kincolith)

Contact Name	George Moore, Village Administrator
---------------------	-------------------------------------

Village Contact Information	Gingolx Village Government Gingolx B.C. VOV-1B0 Phone: (250) 326-4212 Fax: (250) 326-4208
------------------------------------	--

Gitwinksihlkw (Canyon City)

Contact Name	Harry Nyce Jr., Chief Executive Officer
---------------------	---

Village Contact Information	Gitwinksihlkw First Nation PO Box 1 Gitwinksihlkw, BC VOJ 3T0 Phone: (250) 633-2294/5 Fax: (250) 633-2539
------------------------------------	---

Laxgalts'ap (Greenville)

Contact Name	Gloria Murdock-Smith, Chief Executive Officer
---------------------	---

Village Contact Information	Laxgalts'ap First Nation General Delivery Greenville, BC VOJ 1X0 Phone: (250) 621-3213 Fax: (250) 621-3320
------------------------------------	--



Bert Mercer
Economic Development Manager

Nisga'a Lisims Government
PO Box 231, 2000 Lisims Drive
New Aiyansh, BC V0J 1A0
Phone: (250) 633-3000
Email: bertramm@nisgaa.net

www.nisgaalisims.ca



Andrew Webber
Manager, Planning & Development Services

Regional District of Kitimat-Stikine
300, 4545 Lazelle Avenue
Terrace, BC V8G 4E1
Phone: (250) 615-6100
Email: awebber@rdks.bc.ca

www.rdks.bc.ca



Northern Development Initiative Trust
Contact for information on financial
incentives for manufacturing companies

www.northerndevelopment.bc.ca



Invest BC
Contact for investor site selection
and expansion services.

www.investbc.com